



***GEC's 20th Anniversary Forum***  
***“Building Partnership for the Environment”***

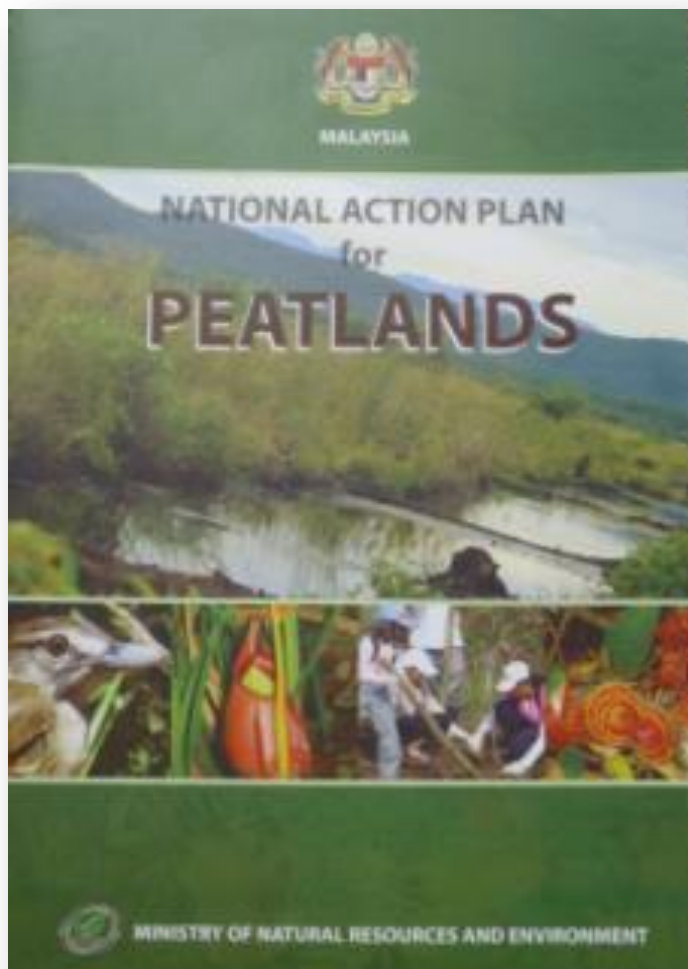
**STATUS OF IMPLEMENTATION OF  
NATIONAL ACTION PLANS ON PEATLANDS  
(NAPP)**

**FORESTRY DEPARTMENT PENINSULAR MALAYSIA**

**23 April 2019**  
**The Kuala Lumpur Performing Arts Centre (KLPac)**



# NATIONAL ACTION PLAN ON PEATLANDS (NAPP)





**Knowledge  
and  
understanding  
of peatlands**



**Capacity and  
coordination**



**Fire and haze  
prevention**



**Integrated  
management**



**National, state  
and regional  
cooperation**



**Resources for  
management  
and protection**

**Strategies for Enhanced Sustainable Peatland Management**





# Status of NAPP Implementation





# Status of NAPP Implementation

## Fire Prevention, Control & Monitoring

- Identification of fire prone areas
- Hydrological management
- Fire prevention and monitoring
- Upgrading access roads

## Integrated Management of Peatlands

- IMP: Selangor and Pahang
- FMP: Johor and Terengganu
- Allocation: Federal and State Governments

## Restoration & Rehabilitation

- Replanting implemented using Federal and State Government's budget
- Engagement with NGOs and CBOs

## Conservation of Peatland Biodiversity

- Rehabilitation of degraded areas
- *Gonystylus bancanus* SPA area
- Nursery for peatland species
- Growth and Yield (G&Y) plots

## Establishment & Promotion of Demonstration Sites for Peatland Management

- CoE in Raja Musa FR, Selangor
- Queen's Commonwealth Canopy
- Development of ecotourism





# Status of NAPP Implementation

## Peatlands & Climate Change

- Carbon assessment

11

## Regional Cooperation

- International projects
- *The Sixth Assembly of the GEF and Associated Meetings*

12

## Financing of the Initiative

- International (eg. Project fundings)
- National (eg. 11<sup>th</sup> MP)
- State (eg: Development Fund)
- Private Sector (eg. CSR)

13





## ESTABLISHMENT OF STUDY PLOT



Study plot by FDPM-FRIM-UPM  
in Sungai Karang FR, Selangor







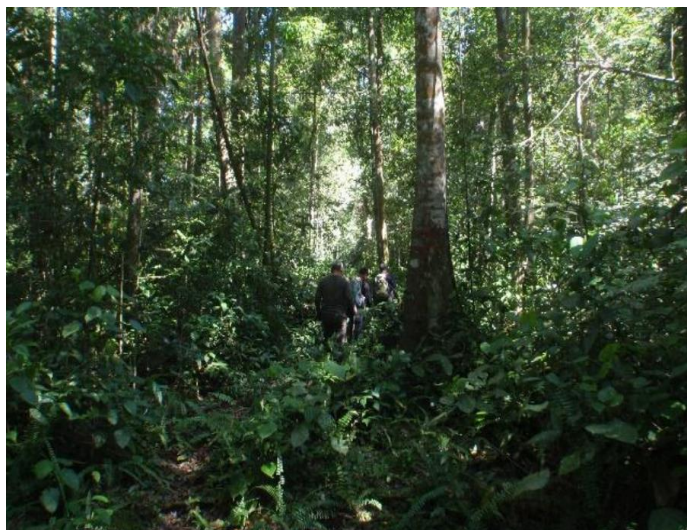
# Virgin Jungle Reserve (VJR)



*Koompassia malaccensis*



*Gonystylus bancanus*



*Shorea tesymanniana*



*Anisoptera marginata*





# Rehabilitation



Replanting area



Replanting with peat swamp forest species saplings





# Hydrological Restoration and Fire Prevention



Tube well



Piezometer



Canal blocks



Retention pond





# Hydrological Restoration and Fire Prevention



Check dam



Clay Dyke



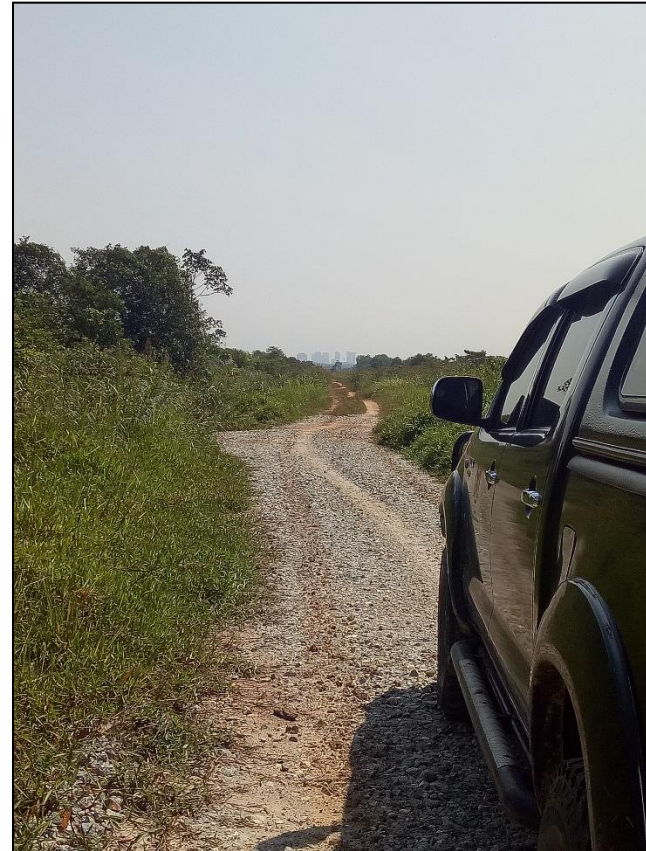
Water piping system



## Other Infrastructure



Watch tower



Upgraded access road





## Publication



Coffee Table Book



Guidelines on Preparation of IMP





**Thank you**

