



IOI GROUP

Sustainability at IOI Corporation

Our journey forward

*Dr. Surina Ismail,
Group Head of Sustainability, IOI Corporation Berhad
April 23, 2019*



www.ioigroup.com



IOI GROUP

CONTENT

1

Introduction

2

IOI's Commitment under SPOP



IOI GROUP

Introduction:

3 Pillars of Sustainability

PILLARS OF
SUSTAINABILITY



PEOPLE



PLANET



PROSPERITY

Aligning with our vision:

We believe we should meet the needs of the present without compromising that of the future generations by

- Committing to protect, rehabilitate and preserve, the environment where we live in
- Ensuring that the economic, social wellbeing and health of our employees & families as well as the wider communities are protected
- Leading & innovating as well as embedding corporate sustainability as part of doing our business

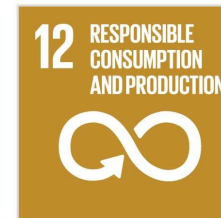
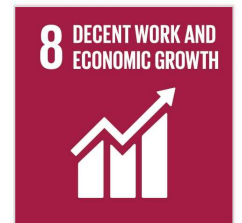
Introduction

Sustainability within IOI

Where sustainability efforts should be concentrated, identify issues that have the biggest impact & are most relevant to business & stakeholders

- Environmental Management
- Human Rights & Workplace
- Innovation in Sustainable Development

Encapsulated under IOI Group's
Sustainable Palm Oil Policy (SPOP)





IOI GROUP

CONTENT

1

Introduction

2

IOI's Commitment under SPOP



IOI GROUP

IOI's Commitment under SPOP

IOI's key commitment under its Sustainable Palm Oil Policy (SPOP) and adoption of UNSDG 17 (Partnership for the Goals):

- To address collaboratively sustainability challenges on a Landscape Level Approach
 - Peat and Water Management
 - Biodiversity and Wildlife Protection
 - Flood and Fire Prevention and Control
 - Community Livelihood Development
- Peatland Management Policy & Guideline: Fully introduced in July 2018 which details IOI's effort towards protection, conservation and management of peatlands.

17 PARTNERSHIPS
FOR THE GOALS



All Rights Reserved

Landscape Level Approach

Bukit Leelau Mini Landscape Level Approach



Bukit Leelau Mini Landscape Level Approach – A multi-stakeholder engagement between IOI's Estates and the communities of adjacent areas.

Project started on September 1, 2018

(Part of SE Pahang peatland landscape identified by Government of Malaysia for Large scale Landscape integrated management program 2017-2021)

Landscape Level Approach

Bukit Leelau Mini Landscape Level Approach

This Project involved :

- Ways to overcome the drainage problem at the forest reserve and its buffer zone which is adjacent to Bukit Leelau
- Activities to prevent future fires include:
 - ✓ Training on fire prevention & control
 - ✓ Fire warning, FDRS signage, Equipment for fire fighting & monitoring
- Rehabilitation effort at the degraded area within the forest reserve and the adjacent buffer zone
- Construction of Canal Blocks with involvement of local communities
- Empowerment program for the Orang Asli community in the area:
 - ✓ Nursery development and wilding collection
 - ✓ Fishing activities through canal blocks
 - ✓ Establishment of Sahabat Hutan Gambut Kampung Tanjung Kelapa (SHGKTK) related to rehabilitation project & focal contact point

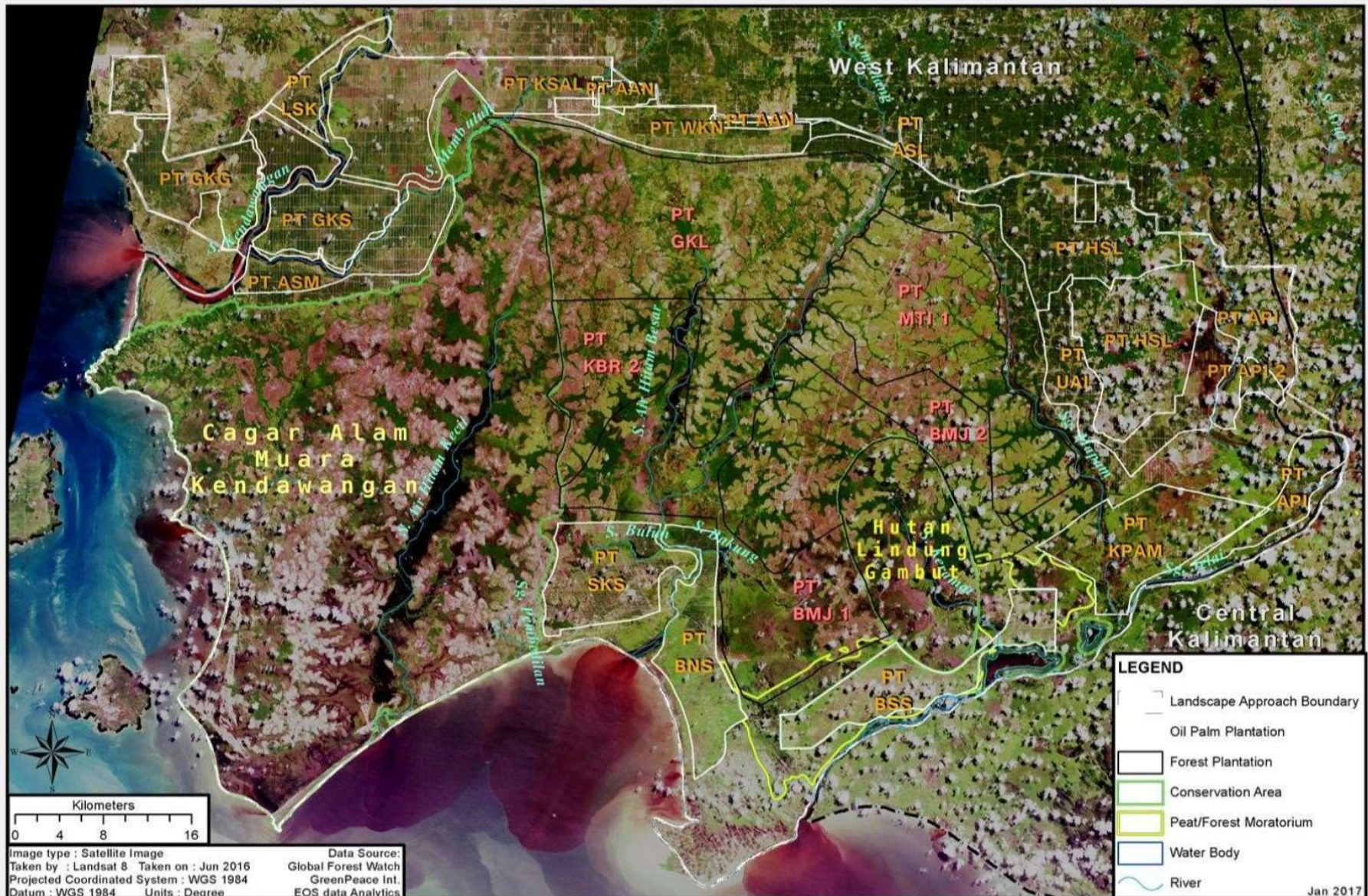




IOI GROUP

Landscape Level Approach

South Ketapang Landscape Level Approach



LAND STATUS OF SOUTHERN KETAPANG LANDSCAPE, WEST KALIMANTAN



IOI GROUP

Landscape Level Approach

South Ketapang Landscape Level Approach

Project Partners: **aidenvironment**



IOI GROUP



Global Environment
Centre

- Building partnerships with other companies across landscape;
- Strengthening the governance system on local and national level;
- Joint vision development on sustainable development and conservation;
- Establishing legally secured conservation areas and linking them across landscape;
- Bringing in additional partners and donors to expand the platform.

Time frame: 5 years, in stages

First 12-month program launched in October 2018





IOI GROUP

Thank You for
your Attention

