

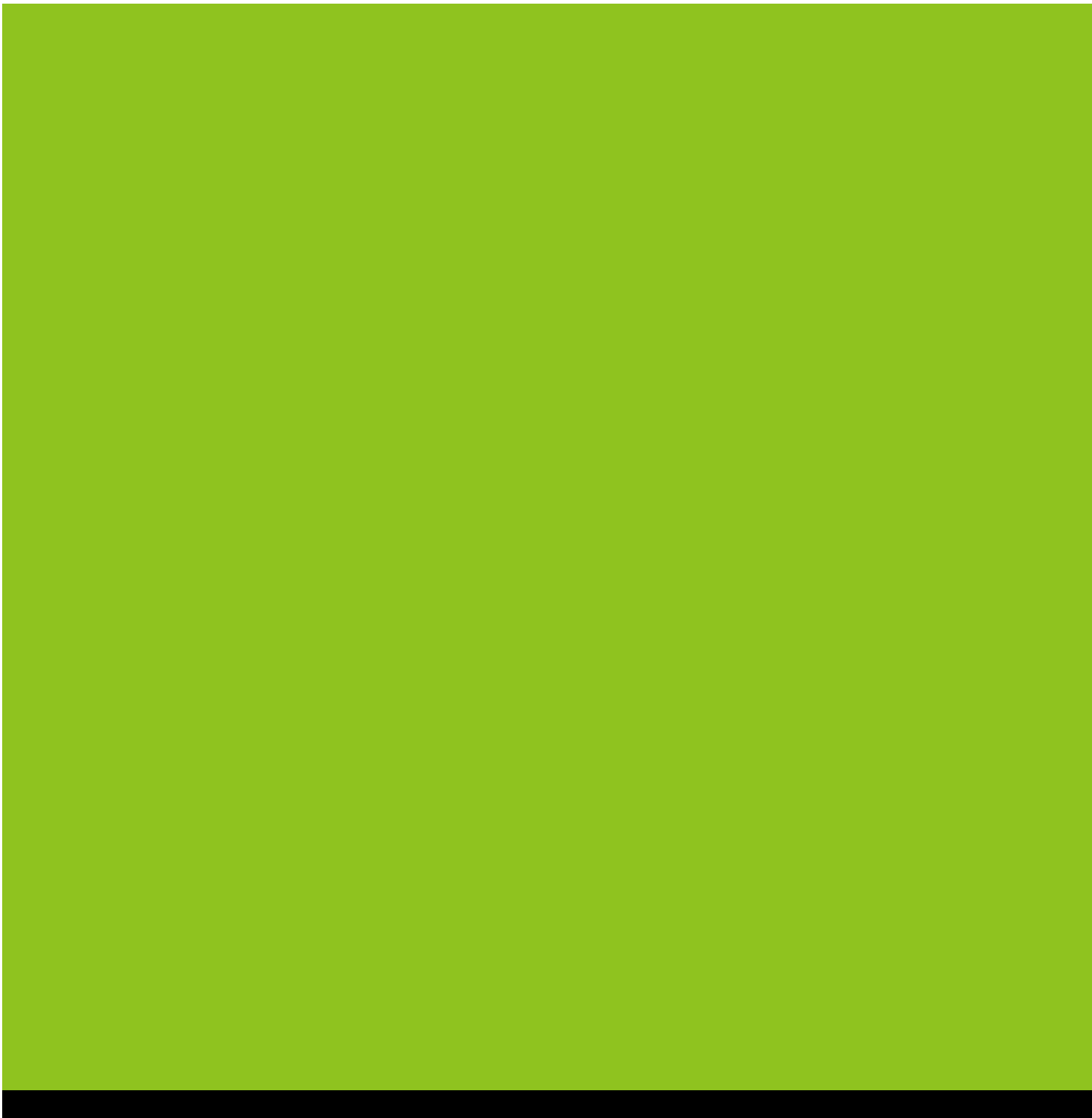


ANNUAL REPORT 2016

#IMPACTONTHEGROUND



**Global Environment
Centre**



CONTENTS

Chairman and Director Message

About Global Environment Centre

- Objective
- Mission
- Organisation structure
- Governance
- Staff and volunteers
- Programme description

Highlights

- River Care Programme
- Forest & Coastal Programme
- Outreach & Partnership Programme
- Peatland Programme

Summary of Financial Report

Partnership and Sponsorship

Message from **THE CHAIRMAN**

It is now eighteen years since GEC was established to work on environmental matters of global importance. This year we continue our commitment to deliver environmental sustainability to the global community. It is an undeniable fact that the road to sustainable is a long and rough, but, we are determined to succeed. Our strengths come from a team of dedicated and passionate staff and partnership we have forged with communities and like-minded organisations. But, what makes this possible is support from our key funders, partners and supporters towards creating environmental sustainability.

This year, we have enlighten the global community of peatlands on tropical peat swamp forest though international seminar organised in partnership with International Mire Conservation Group, replicated success of our water conservation efforts to other parts of Malaysia and supported the implementation of Integrated Management Plan of the North Selangor Peat Swamp Forest 2014-2023.

To all our funders, partners and supporters, we thank you for your generosity and your exceptional commitment. We look forward to working with you and creating a sustainable world for our future.



ZAINUDIN ISMAIL

Chairman of Global Environment Centre

Message from **THE DIRECTOR**

Around the world, people are experiencing the impacts of climate change such as frequent occurrences of severe weather events, changing rain fall patterns and sea level rise. It is a trend that is expected to continue to amplify into the foreseeable future. In 2016, Malaysia witnessed devastated impact of flood and haze caused by peat forest fires. These have led to negative implications towards our economy and society. Hence, it is pivotal to manage our environment and nature prudently.

In GEC, we are inoculating sustainable culture and addressing the crucial benefits of environmental sustainability in every of our projects that we have embarked on. We are making profound difference by illuminating local communities with best management practices to conserve the iconic Klang River and its river basin and going beyond our project areas to illustrate the public on ways to conserve water. We are partnering up with multinational companies to rehabilitate degraded mangrove forest in Perak and reforestation of peatland forest in Selangor.

Through strategic partnership, we have successfully support seven community based organisations and academic institutions on implementing river care and conservation initiatives through the National River Care Fund - Small Grant Programme.

At a global level, GEC is engaging with different stakeholders in the ASEAN region on low carbon and climate resilient programme, focusing on sustainable peatland management. Through this programme, we hope to achieve the goal of the ASEAN Peatland Management Strategy (APMS, 2006-2020).

Environmental challenges will grow in greater complexity in tandem with rapid development. I am confident that we will be able to meet these challenges while pursuing our mission on environmental protection and sustainable use of natural resources.

To all our funders, supporters, partners and collaborators; I look forward to working and creating significant #impactontheground with you. With your help, we can change the world for the better. Thank you for supporting GEC work in 2016.



FAIZAL PARISH

Director of Global Environment Centre

About

GLOBAL ENVIRONMENT CENTRE

The Global Environment Centre was established in 1998 to work on environmental issues of global importance. The Centre is registered in Malaysia as a non-profit organization (Reg. no. 473058-T) but works regionally and internationally both directly and through many partners. It supports information exchange and capacity building as well as undertakes strategic projects particularly in developing countries. It works in partnership with other like-minded agencies worldwide.

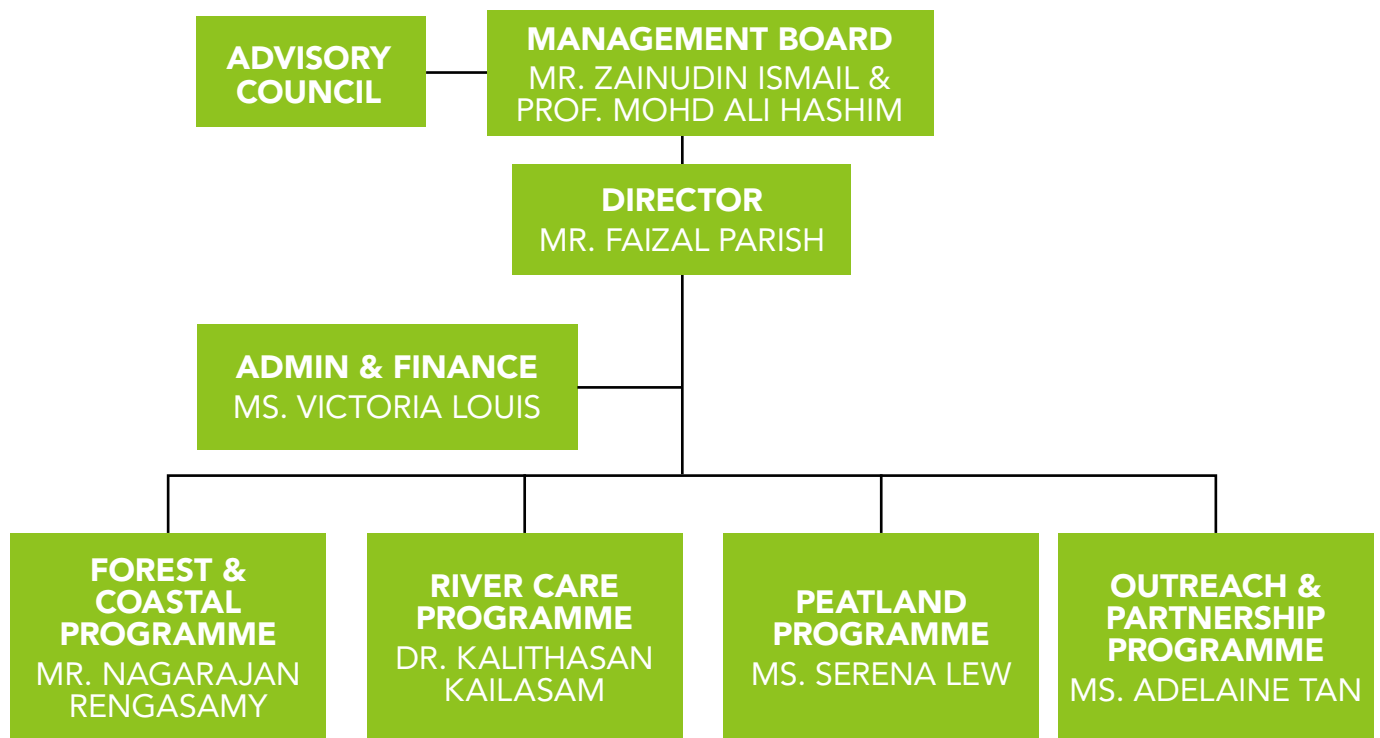
OBJECTIVE

1. To promote integrated management of biodiversity and water resources with a focus on community involvement and biodiversity conservation.
2. To promote the protection and sustainable use of forests and wetlands with a focus on integrated management for biodiversity and climate change
3. To enhance awareness, understanding and capacity as well as partnerships between different organizations and sectors to address environmental issues.

MISSION

To support the protection of the environment and sustainable use of the natural resources to meet local, regional and global needs, through strategic partnerships with communities and like-minded organizations.

ORGANISATION STRUCTURE



GOVERNANCE

ADVISORY COUNCIL (2016)

MS AKIKO DOMOTO

*Former Governor of Chiba Prefecture, Japan
Former Vice President of IUCN*

MR DELMAR BLASCO

Former Secretary General, Convention on Wetlands (Ramsar, Iran 1971)

MR EFFENDY SUMARDJA

*Former Special Assistant for International Relations to the Minister of Environment,
Ministry of the Environment, Indonesia*

TAN SRI RAZALI ISMAIL

*Former Special Advisor to the Prime Minister of Malaysia
Former President of the United Nations General Assembly (1996/7)
First Chairman of the Commission of Sustainable Development*

PROF TAN SRI DR ZAKRI ABDUL HAMID

*Science Advisor to Prime Minister of Malaysia
Former Director, Institute of Advanced Studies, UN University, Japan
Former Chairman of SBSTTA, Convention on Biological Diversity*

DATO' WONG SAI HOU

*Former State Assemblyman for Kg Tunku
Chairman, Petaling Jaya City Environment Committee*

DATUK ZUL MUKHSHAR BIN MD. SHAARI

Former Director General Forest Department of Peninsular Malaysia

DATO' IR. LIM CHOW HOCK

*Former Director of Department of Drainage & Irrigation (River and Coastal) of
Peninsular Malaysia*

MANAGEMENT BOARD

MR ZAINUDIN ISMAIL

Chairman

Environmental Lawyer

Former Chairman of the KL Bar Council

PROFESSOR MOHD ALI HASHIM

Department of Chemical Engineering, University Malaya, Malaysia

STAFF AND VOLUNTEERS

GEC's activities are coordinated through a secretariat currently with thirty staff. In addition, a broad range of associates and partners assist in the implementation of activities. GEC undertakes projects in more than 10 countries mainly in the Asia Pacific region either operating directly or through local partner organizations. GEC's effort is also widely supported by volunteers, for examples in rehabilitation of Raja Musa Forest Reserve, rivers cleanup and others. GEC currently have 600 in the volunteer database.

PROGRAMME DESCRIPTION

RIVER CARE PROGRAMME

The focus of this programme is to promote and support the integrated management of river basins. Particular emphasis is exerted on ensuring that biodiversity, wetland conservation and community needs are well incorporated into river basin management.

FOREST AND COASTAL PROGRAMME

The programme aims to promote and support the sustainable management of forests and wetlands to conserve biodiversity and mitigate climate change.

The Forest & Coastal Programme includes a broad range of activities related to assessment and management of forests and biodiversity at the local, national and global levels. This programme also focuses on climate change issues.

PEATLAND PROGRAMME

The Peatland Programme aims to promote sustainable management of peatlands, especially in Southeast Asia. The programme works closely with various stakeholders to promote best management practices in peatland management, fire prevention and rehabilitation.

OUTREACH AND PARTNERSHIP PROGRAMME

The programme incorporates activities relating to general capacity building, environmental education, information exchange and raising awareness on global environmental issues.

HIGHLIGHTS

RIVER CARE PROGRAMME

GETTING ON THE ACT OF CONSERVING WATER

Funder: HSBC Bank Malaysia Berhad

A three year water conservation project aimed to educate students on wise management of water resources. The programme introduced a water conservation module known as DRH20 for schools under the existing RIVER Ranger programme.

IMPACTS MADE:

A total of ten agencies, 30 schools with a number of 600 students were successfully exposed to this programme. About 20 teachers from various backgrounds were brought in under the programme, creating new platform for them to engage more students in environmental education particularly focusing on water conservation. The 30 schools have also successfully implemented their water conservation initiatives.



RIVER CARE AND EDUCATION PROGRAMMES

Funder: GAB Foundation

Sungai Kinta River Education Programme (in Perak) and Sungai Penchala River Education Programme (in Selangor and KL) are the expansion programmes of Sungai Way W.A.T.E.R Project (Working Actively through Education and Rehabilitation) which began in 2007. W.A.T.E.R is a pioneer initiative to educate the public about the importance of water and why and how we should conserve and protect its source: our rivers.

IMPACTS MADE:

For Sungai Penchala River Education Programme, a business community capacity building programme focusing on waste segregation and waste audit was conducted for targeted food courts that are within the river basin; a river management and auditing programme was organised for 7 local community groups residing in the river basin and 5 educational institutions participated in Training of Trainers (ToT) programme on river management. Three education and information centers i.e. River Care Education Centre at the upstream of Sungai Penchala, Bukit Kiara, Sungai



Penchala Information Centre and Sungai Penchala Open Classroom were established to engage the public on environmental awareness.

An environmental camp for youth was also organised to instill environmental awareness particularly on river and 8 outreach activities using W.A.T.E.R Mobile River Care Unit have been conducted. The Sungai Penchala River Education Programme is currently working closely with Yayasan Chow Kit to outreach and educate youngsters on river care activities.

For Sungai Kinta River Education programme, a workshop entitled Youth Environment Leadership was organised with University Tunku Abdul Rahman (UTAR) and Youth Community of Kinta River Basin. The programme also organised a capacity building programme on river care for local communities residing in Sungai Kinta river basin, conducted educational and awareness programme on river monitoring and waste management with local schools, organised a RIVER Ranger training for school students, conducted an annual river water quality testing with UTAR, organised 2 projects with local community and youths on waste management and organised 4 open days with Youth Community of Kinta River Basin for public and media on river and waste management.



BUILDING ZERO WASTE COMMUNITY IN PANGKOR ISLAND

Funder: Vale Minerals Malaysia Sdn. Bhd.

This initiative is a 3 year project focusing on empowering local community to reduce coastal water pollution by managing waste and water sustainably on Pangkor Island via a Waste to Wealth concept. This initiative is also supported by Department of Irrigation and Drainage Manjung, Perak, Manjung Local Council and Manjung Land & District Office.



IMPACTS MADE:

The project has developed an environmental education programme focusing on waste reduction and river and coastline monitoring programme entitled Island Ranger Programme for local community. This environmental education programme was also used as a training module at 5 different schools in Pangkor. In addition, a series of integrated waste management materials were developed and distributed

to students, local communities and business operators.

NATIONAL RIVER CARE FUND CYCLE II

National River Care Fund is an initiative established by GEC to support local community, community based organisations/non-profit organisations to pursue their own river conservation initiatives. The goals are to establish and encourage a river care civil society that has the capability to contribute and demonstrate the best management practices of River Care in Malaysia and to support establishment and sustainability of community based water and river care programme in Malaysia. GEC believes this initiative will motivate the local community in becoming a river care civil society and provide a platform of collaboration among government, corporates and public.



IMPACTS MADE:

NRCF Cycle II is the second round of NRCF projects commenced in second half of 2016. A total of 7 organisations and learning institutions were selected and awarded with a grant to conduct their own river care activities. Each of these organisations and learning institution received up to RM 5,000 from GEC to conduct the activities. The lists of recipients are Kelab Alami Kawa in Selangor, University Technology Malaysia (Sustainability Campus) and Green Earth Society in Johor, Water Watch Penang in Penang, KRT Rumah Pangsa AU2 Taman Keramat in Kuala Lumpur, Kumpulan Kipouvu Community Homestay in Sabah, and Kawasan Rukun Tetangga Tamn Chepor Jaya in Perak.

FROM RESPONSE TO RESILIENCE

Funder: Malaysian Water Partnership

Malaysian Water Partnership (MyWP) under the Global World Partnership (GWP) aims to create a platform and pathway to the community to be flood-proofing and adapt for climate resilience. Global Environment Centre has been entrusted as a working partner to implement this activity.



IMPACTS MADE:

Local communities from 10 villages in Pasir Mas were trained to find safe routes to travel during flood disaster and developed safe routes map using Town Watching for Disaster Management handbook and modules. Grab bags were distributed to the communities that consist of materials and tools for early preparation by community as well as the emergency contact details to assist the communities before, during and after flood. Managing potable water was also part of the capacity building programme to train the local communities about mitigation measures and alternative water treatment methods for use during flooding period.



FOREST AND COASTAL PROGRAMME

INVESTING IN PEATLANDS OF NORTH SELANGOR

Funder: HSBC Bank Malaysia Berhad

GEC's partnership with HSBC Bank Malaysia Berhad began in 2011, aimed to rehabilitate Raja Musa Peat Swamp Forest through community participation. The three year project resulted in the establishment of a local community group who are aware and concerned about the peat swamp forest degradation issues called Friends of North Selangor Peat Swamp Forest (FNPSPF); and development of peatland environmental education programme called Peatland Forest Ranger, to educate school children on the importance of environmental protection on peat swamp forest.



In 2016, a second three year project was completed to support the local community group efforts on protecting and conserving the peat swamp forest resources through rehabilitation and sustainable management practices. The project developed various initiatives to enhance and strengthen the capacity among the local community in peatland water management and forest rehabilitation works.

IMPACTS MADE:

Spearheaded by GEC and Selangor State Forestry Department, a total of 6375 Tenggek Burung (*Melicope lunu-ankenda*) saplings were planted by Friends of North Selangor Peat Swamp Forest (FNPSPF) together with 1695 volunteers in year 2016, covering 10.13 hectare. A total of six exhibitions were organised by Friends of North Selangor Peat Swamp Forest at six different places, outreaching to approximately 1500 audiences. The Friends of North Selangor Peat Swamp Forest has also constructed three canal blockings at the forest reserve to raise water level and wet the peat soil to prevent peat fire. This activity was done together with 395 volunteers.

A community handicraft shop was established to support social and economic needs of the local community living around the forest reserve. Handicraft such as batik, key chains and picture frames made from natural resources like peat tree stumps, bamboo, mengkuang and pandanus are being sold in the shop. The handicraft shop is currently being managed FNPSPF.

A peat water fishing competition was organised to engage public in the rehabilitation activities. This unique fishing competition, first of its kind, was participated by more than 60 local communities, anglers and stakeholders to raise awareness about the importance of conserving peatland forests and preserve peat water for healthy peatland ecosystem. Six Peatland Forest Ranger trainings were held with selected schools neighbouring the forest reserve. Peatland Forest Ranger is GEC's environmental education programme that aims to instill environmental awareness and education amongst the younger generation on the importance of environmental

protection especially the peat swamp forest.

COLLABORATION TO CONSERVE RAJA MUSA FOREST RESERVE

Funder: Yayasan Sime Darby

Partnership in Conservation and Rehabilitation of Forest Compartment 32 & Forest Compartment 70 Boundary of Raja Musa Forest Reserve is a project funded by Yayasan Sime Darby to strengthen the efforts for fire prevention, rehabilitation and conservation of the North Selangor Peat Swamp Forest. The project directly addresses one of Sime Darby Foundation key priorities – namely conservation of the environment. The project dedicated itself to a program to protect and rehabilitate the 20 hectares of degraded forests in Forest Compartment 32, Raja Musa Forest Reserve. The rehabilitation activities are undertaken through community participation. The rehabilitated area has reduced incidences of peatland fires through water management and implementing fire prevention measures in RMFR and adjacent lands that include Sime Darby plantation estates.

IMPACTS MADE:

The project has established a community nursery managed by the Friends of North Selangor Peat Swamp Forest (FSPSF). The nursery raised 20,000 Tenggek Burung (*Melicope lunu-ankenda*) saplings to support the rehabilitation programme at FC32 in Raja Musa Forest Reserve (RMFR). A total of 18,500 Tenggek Burung saplings were planted by 160 volunteers in 20 ha of FC 32 at Raja Musa Forest Reserve and 69 canal blocks were constructed to raise water table by about 10-30cm on average; reducing GHG emissions, enhancing natural regeneration, preventing fire and providing water supply to existing oil palm plantations adjacent to forest reserve including Sime Darby Plantation (Raja Musa Division). Thirty piezometers were installed to monitor the water level at the project site.



As part of the project awareness campaigns, two awareness posters were developed and distributed to the public and stakeholders. A Peatland Forest Ranger programme was also organised for school children to raise awareness on peat swamp forest and conserve the Raja Musa Forest Reserve. The project has organised a series community and institutional engagements to work on peat fire prevention and peat rehabilitation at FC 32, RMFR, supported by Selangor State Forestry Department, Selangor State Government, Fire & Rescue Department, Sime Darby Plantation, GEC, Friends of NSPSF, and local communities.

A capacity building programme was organised focusing on Best Management Practices (BMP) on Oil Palm Plantation for smallholders adjacent to the forest reserve. This was done in partnership with Malaysian Palm Oil Board (MPOB) & Sime Darby Plantation. Twenty seven smallholders were involved in the programme. This project has also been recognised as one of the key additional efforts to facilitate the implementation of the

Integrated Management Plan for North Selangor Peat Swamp Forest 2014-2023 that was approved by the Selangor state government on December 2014.

ESTABLISHMENT OF COMMUNITY-BASED RECREATIONAL FISHERY & ECOTOURISM IN SEMBILAN ISLANDS

Funder: Vale Malaysia Minerals Sdn Bhd

The two year project focused on exploring opportunities for the identification of community-based resource management areas. The project focused on employing a bottom-up approach where local communities were prime movers of initiatives that eventually lead to sustainable management of marine environment, in particular, the inshore and coastal fisheries resources that the local communities depend on.

IMPACTS MADE:

Establishment of Rakan Pulau Sembilan (RPS), an informal community group that is involved in promoting community based recreational fishery and capacity building workshop entitled "Bengkel Program Perikanan & Perlancongan Alam Semulajadi Berasaskan Komuniti Tempatan" was organised and participated by 80 participants from RPS, fisheries association from Lekir, Manjung and Pangkor, relevant government agencies, and tourism operators. They were taught on implementing sustainable business practices (through ecotourism) and illuminated on topics such as coastal ecosystem and human impacts.

RESTORATION AND CONSERVATION OF SOUTHERN MANJUNG MANGROVE FOREST

Funder: Vale Malaysia Minerals Sdn Bhd

GEC partners with Vale in Malaysia to establish a community based mangrove protection and rehabilitation programme to enhance coastal and fisheries protection and to develop sustainable alternative livelihood options for local communities. Local community participation is recognised as an important tool in mangrove rehabilitation.

IMPACTS MADE:

A total of 15,200 mangrove tree saplings were planted covering 2.5 ha. of Lekir Forest Reserve including a large scale tree planting event was organised involving 1,073 volunteers planting 10,000 mangrove tree saplings. The project organised three capacity building programmes on cottage industry for alternative livelihood options for the women of Lekir Sitiawan village. The women were trained by professional trainers to produce high quality handicraft made from recycled materials or non-forest timber products that will be sold via e-commerce. This is hoped to generate additional income for the local communities; and a peer



learning programme was organised to empowered the Friends of Lekir Setiawan Mangrove to develop a homestay programme for tourist to experience the malay kampung lifestyle. Currently, there are 10 families from Sungai Tiram Village and Batu 10 Village involved in the farmstay programme.

OUTREACH AND PARTNERSHIP PROGRAMME

LEDS AFOLU WORKING GROUP SECRETARIAT

In 2016, GEC completed its term as the Secretariat for AFOLU WG. The LEDS GP Agriculture, Forestry, and Other Land Use (AOFLU) Working Group promotes and facilitates information, knowledge sharing, and adoption of tools and solutions for climate resilient, low emission development across the agriculture, forestry and other land use sectors.

The AFOLU Working Group serves as a platform for engaging decision makers, practitioners, and researchers while working towards integrating low emissions development activities in the AFOLU sector. It was first convened at the Asia LEDS Forum in 2013 and was jointly organized by USAID's supported Lowering Emissions in Asia's Forests (LEAF) program and the United States Forest Service (USFS).

GEF CSO NETWORK SECRETARIAT

In 2016, GEC continued to serve as the Interim Secretariat for GEF-CSO Network. The network was established in May 1995 following the Global Environment Facility (GEF) Council's decision to enhance relationship between the GEF and Non-Governmental Organisation (NGOs). The Network is made up of GEF – accredited organisations whose work in environment and sustainable development is aligned with the GEF mandate. It has a global organizational structure with Regional Focal Points based in 16 different regions supported by a Secretariat and a global Coordination Committee including representative of indigenous peoples. The Network links member organisation in all regions of the world. Its role is expanding from focusing mainly on input to GEF planning and policy making to one of empowering the engagement of civil society in the implementation of GEF programmes.

PEATLAND PROGRAMME

SUPPORTING THE ASEAN SECRETARIAT FOR ASEAN PROGRAMME ON SUSTAINABLE MANAGEMENT OF PEATLAND ECOSYSTEMS 2014-2020 (APSMPE) AND ROAD MAP TO A HAZE-FREE ASEAN

In September 2013, ASEAN Ministers responsible for the environment endorsed the establishment of a long-term multi-stakeholder ASEAN Programme on Sustainable Management of Peatland Ecosystems 2014-2020 (APSMPE). The objective of APSMPE is to achieve the goal of ASEAN Peatland Management Strategy 2006-2020 (APMS), namely to promote sustainable management of peatlands in the ASEAN region through collective actions and enhanced cooperation, support and sustain local livelihoods, reduce risk of fire and associated haze and contribute to global environmental management. The ASEAN Secretariat is spearheading the Programme with technical support from GEC.

In 2016, GEC provided inputs and updates for two ASEAN level meetings i.e. 18th Meeting of the Sub-Regional Ministerial Steering Committee (MSC) on Transboundary Haze Pollution in Singapore and 12th Meeting of the Conference of the Parties to the ASEAN Agreement on Transboundary Haze Pollution in Kuala Lumpur, Malaysia.

GEC also assisted the National Environment Agency of Singapore to co-organise a Regional Training of Trainers (TOT) Workshop for Implementing the ASEAN Guidelines on Peatland Fire Management on 30 May – 1 June 2016 in Pontianak, West Kalimantan, Indonesia. The workshop was undertaken with funding from the ASEAN Haze Fund and NEA Singapore with logistical and administrative support from the ASEAN Secretariat and Ministry of Environment and Forestry of Indonesia.

GEC was also involved in the development of the EU-ASEAN Peatland Programme – Sustainable Use of Peatlands and Haze Mitigation in ASEAN (EU-SUPA). Legal documentation for the Programme was signed in December 2016 and further negotiation between EU and ASEAN is being held to finalise the set up and implementation of the Programme.

ASSISTING ASEAN MEMBER STATES IN PEATLAND CONSERVATION

Through International Fund for Agricultural Development (IFAD), GEC was involved in providing technical inputs to assist Indonesia in preparing a Project Identification Form (PIF) for its GEF-6 Project – Integrated Management of Peatland Landscape of Indonesia (IMPLI).

For Malaysia, GEC was involved in preparing a Project Document for its GEF-6 Project – Sustainable Management of Peatland Ecosystems in Malaysia (SMPEM). The SMPEM PIF was re-submitted in April 2016 and approved by GEF in June 2016.

GEC was also engaged by IFAD to conduct a Pre-design Background Study Mission to collect socio-economic information of all proposed project sites for SMPPEM.

GEC was involved with International Union for Conservation of Nature (IUCN) in preparing a Project Identification Form (PIF) for the Mekong countries – Sustainable Management of Peatland Ecosystems in Mekong Countries. This is a sub-regional project involving Cambodia, Lao PDR and Myanmar. The PIF was approved by the GEF Council in April 2016. GEC provided information to support the Design Mission Team.

ASEAN FIRE ALERT TOOL

The Fire Alert Tool is a smartphone application created in 2015 which was given an upgrade in early 2016. The Fire Alert Tool is designed to alert land managers of the current hotspot information from the ASEAN Specialised Meteorological Center. The upgraded version included maps of current fire risk based on Fire Weather Index (FWI) of the Fire Danger Rating System (FDRS). The upgrade which now allows users to combine monitored areas with colleagues and selection of pre-determined district boundaries (for Indonesia) was sponsored by USAid, as well as development of the application for iOS version.



ENGAGEMENT WITH IOI PLANTATIONS

Following their RSPO suspension, GEC was appointed to guide IOI plantations in West Kalimantan; running rapid assessments and presenting follow up recommendations as well as responding to stakeholders regarding the suspension issue. The suspension was lifted based on immediate actions undertaken by the IOI on the ground and high commitment to rehabilitate and conserve the areas of high conservation value, high carbon stock and peatland. GEC continues to guide and support the rehabilitation effort of the company.



15TH INTERNATIONAL PEAT CONGRESS

The 15th International Peat Congress which was held in Kuching, Sarawak from 15-18 August 2016. Jointly organised by the International Peat Society and the Malaysian Peat Society, it was the first time that the Congress was held in a tropical country. GEC contributed 2 oral presentations and 3 posters to highlight the conservation of peatland ecosystems in Southeast Asia and China.

IMCG FIELD SYMPOSIUM

GEC co-organised the International Mire Conservation Group (IMCG) Field Symposium that was successfully undertaken from 19th to 28th August 2016 where 29 international participants from 14 countries visited eight sites in Borneo and Peninsular Malaysia. The sites were Maludam and Lawas/ Kayangeran in Sarawak, Kuala Belait and Badas Forest Reserve in Brunei Darussalam, Crocker Range National Park in Sabah, Raja Musa and Sungai Karang Forest Reserves in Selangor; and Gunung Brinchang Mossy Forest, Pahang. A seminar "Tropical Peatlands in a Global Context" was also held on 27th August in Cameron Highlands, Pahang. The seminar was officiated by Secretary General of Ministry of Natural Resources and the Environment Malaysia.



CLIMATE LEADERSHIP

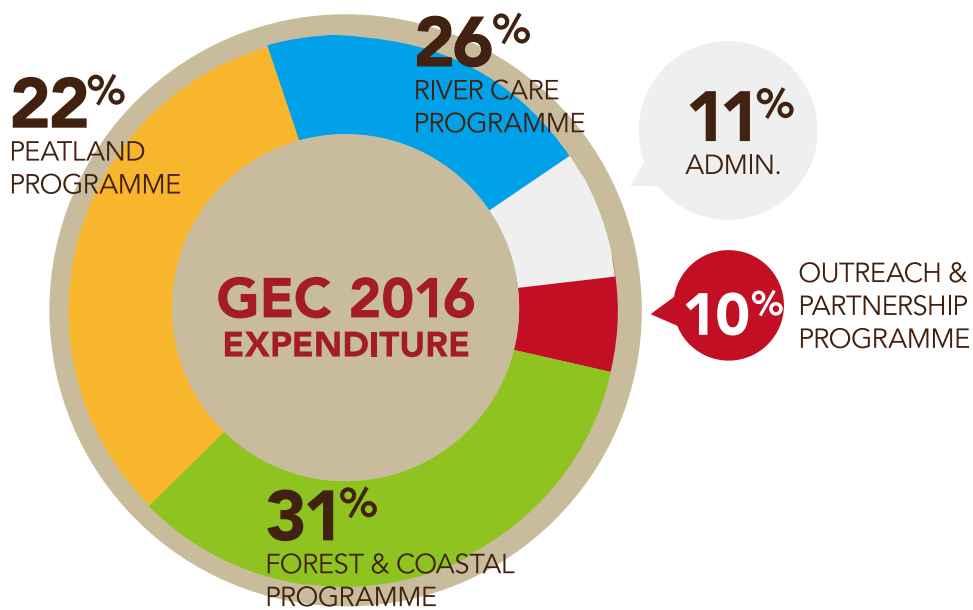
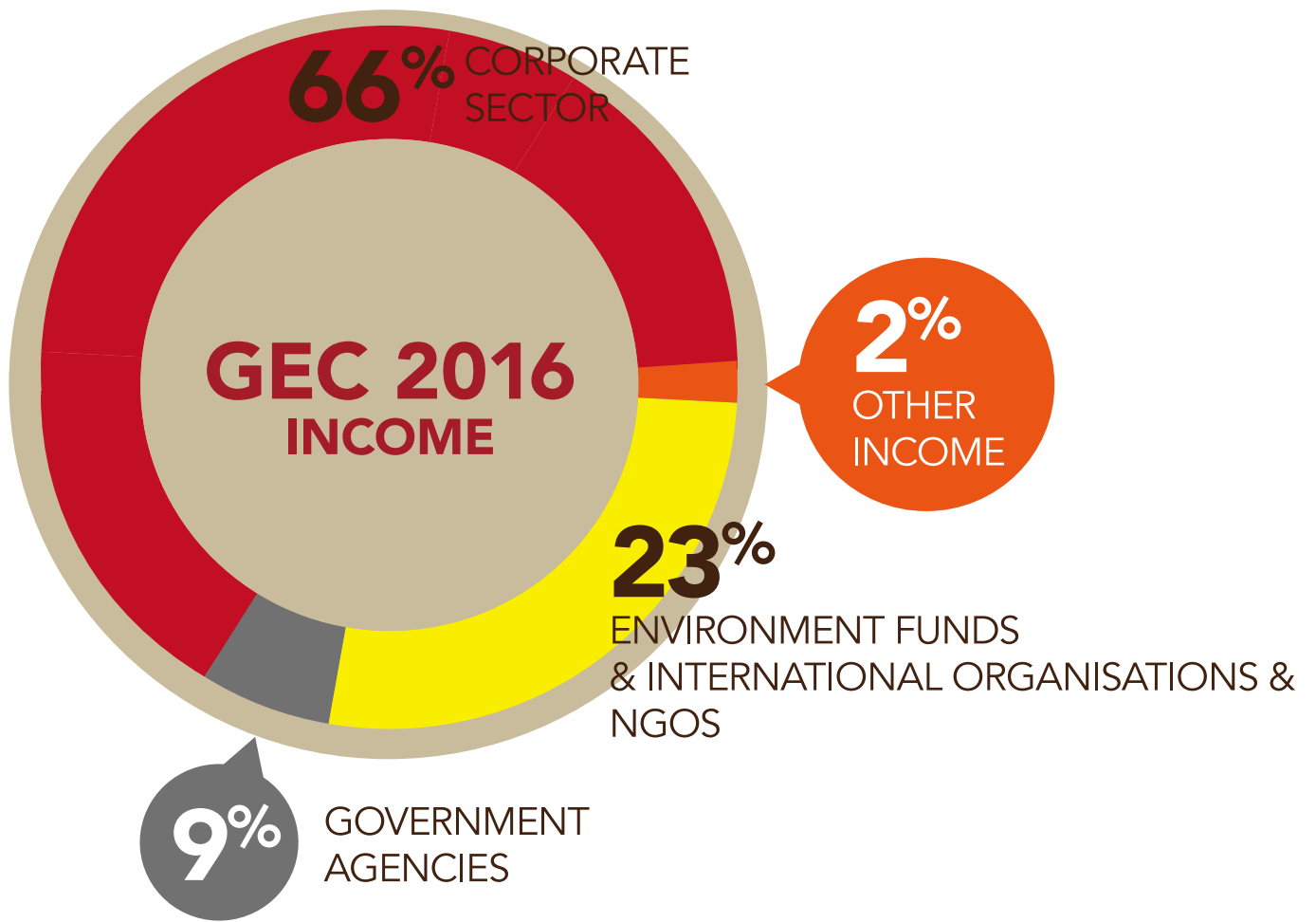
GEC continued to be the co-chair of Roundtable for Sustainable Palm Oil (RSPO) Emissions Reduction Working Group (ERWG). The Emission Reduction Working Group has produced the RSPO GHG Assessment Procedure for New Plantings, Version 3 and updated the RSPO PalmGHG Calculator, Version 3. Both were launched at the 14th Roundtable in Bangkok, Thailand in November 2016.

GEC was also appointed to chair the Malaysian Climate Change Group (MCCG) for 2016/2017 session.

SUMMARY FINANCIAL REPORT (FROM AUDIT REPORT)

INCOME	2016 (MYR)	2015 (MYR)
GOVERNMENT AGENCIES	473,991	450,794
ENVIRONMENTAL FUND & INTERNATIONAL ORGANISATION & NGOS	1,183,811	1,331,908
CORPORATE SECTOR	3,476,937	2,743,503
OTHER ORGANISATION	5,186	1,543,018
OTHER INCOME	82,003	315,852
TOTAL	5,221,929	6,385,075

EXPENDITURE	2016 (MYR)	2015 (MYR)
FOREST & COASTAL PROGRAMME	1,480,001	1,367,838
RIVER CARE PROGRAMME	1,219,549	1,109,146
PEATLAND PROGRAMME	1,019,155	1,917,206
OUTREACH & PARTNERSHIP PROGRAMME	461,887	608,267
ADMIN & FINANCE	499,683	459,894
TOTAL	4,680,274	5,462,351
NET SURPLUS	541,655	922,725



PARTNERSHIP & SPONSORSHIP

Global Environment Centre relies on the generosity of individuals and companies to continue our conservation work and community education/building. Through corporate partnerships and donations, donors have funded our projects. Key initiatives have included rehabilitation of North Selangor Peat Swamp Forest – from helping to rehabilitate the forest, prevention of peatland fire and haze and to provide sustainable livelihood for local community, and in river conservation in several states, including Selangor, Pulau Pinang and Perak. GEC is fortunate to work in partnership with a number of dedicated companies who are committed to protect our environment. For their exceptional support during the past year, we gratefully acknowledge the generosity of the following:

List of International & Government Partners:

- Global Environment Facility
- International Fund for Agricultural Development (IFAD)
- International Mire Conservation Group
- Jabatan Pengairan dan Saliran Malaysia
- Jabatan Perhutanan Selangor/Selangor State Government
- Jabatan Perhutanan Semenanjung Malaysia
- MyWater Partnership
- National Environment Agency (NEA), Singapore
- Suruhanjaya Perkhidmatan Air Negara (SPAN)

List of Contributors:

For grants/contributions more than RM100K

- Earthwatch Institute
- GAB Foundation
- Gamuda Land
- HSBC Bank Malaysia Berhad
- IOI Plantations Sdn Bhd
- Vale Minerals (Malaysia) Sdn Bhd
- Yayasan Sime Darby

For grants/contributions RM50K - 100K

- Boh Plantations Sdn Bhd
- Ericsson (M) Sdn Bhd
- Yayasan Hasanah

For grants/contributions less than RM50K

- 99 Speedmart Sdn Bhd
- Chemopharm Sdn Bhd
- Cuscap Berhad
- Digi Telecommunications Sdn Bhd
- Donations from individuals
- Ecofields Pte Ltd
- Master Pyroserve Sdn Bhd
- Netsprint Sdn Bhd
- PM Haze Movement
- Respol Malaysia Sdn Bhd
- Spritzer Malaysia Sdn Bhd
- Takaso Rubber Products Sdn Bhd
- The STAR Media Group
- University of Nottingham
- University of Toronto
- University of Tun Hussein Onn
- Universiti Putra Malaysia (UPM)
- WWF Malaysia



**Global Environment
Centre**

A: 2nd Floor, Wisma Hing, 78, Jalan SS2/72,
47300 Petaling Jaya, Selangor Darul Ehsan, Malaysia

T: +60 3 7957 2007

F: +60 3 7957 7003

E: outreach@gec.org.my

WWW.GEC.ORG.MY

